

3 Barton Road, London, W14 9HA

A fabulous and well presented two double bedroom lower ground floor flat, sold with no onward chain.

Located in a well maintained converted Victorian end terrace building, the property is immaculate throughout, has an open plan kitchen, reception room, and two double bedrooms, one leading through, to a private courtyard garden.

Barton Road is a very popular road and is conveniently located close to local shops, amenities and West Kensington & Barons Court underground stations.

The lease has now been extended to 148 years and also includes a share of the freehold.

Please call to arrange a viewing.

Asking Price £600,000

3 Barton Road

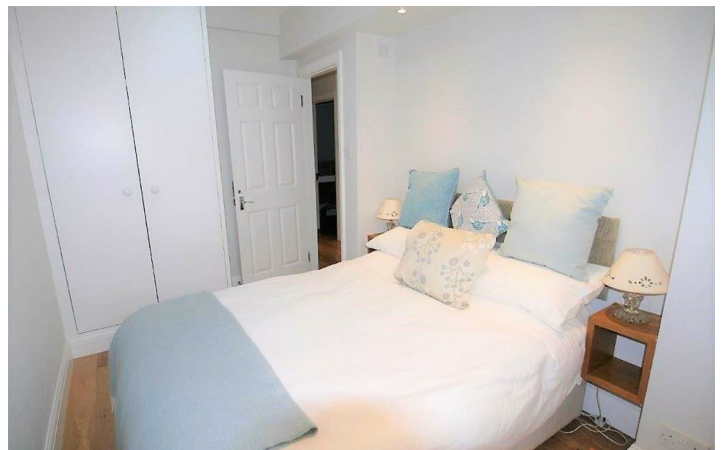
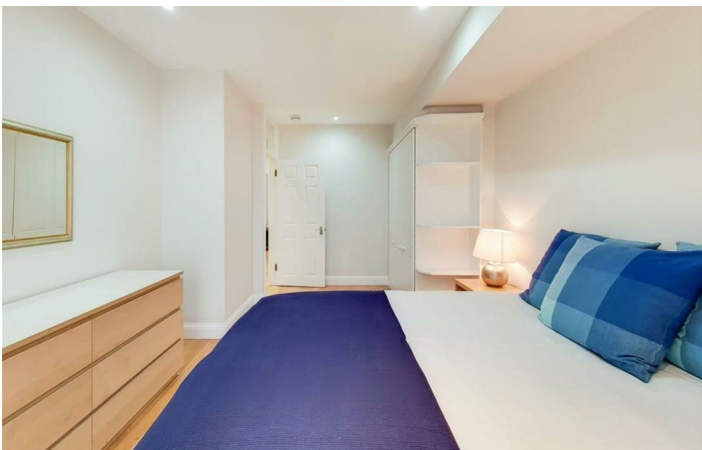
, London, W14 9HA



- TWO DOUBLE BEDROOMS
- PRIVATE PATIO COURTYARD
- ON ROAD PARKING
- LOCATED NEAR TUBE STATION
- VIEWING HIGHLY RECOMMENDED
- LEASE EXTENDED TO 148 YEARS
- SHARE OF FREEHOLD INCLUDED

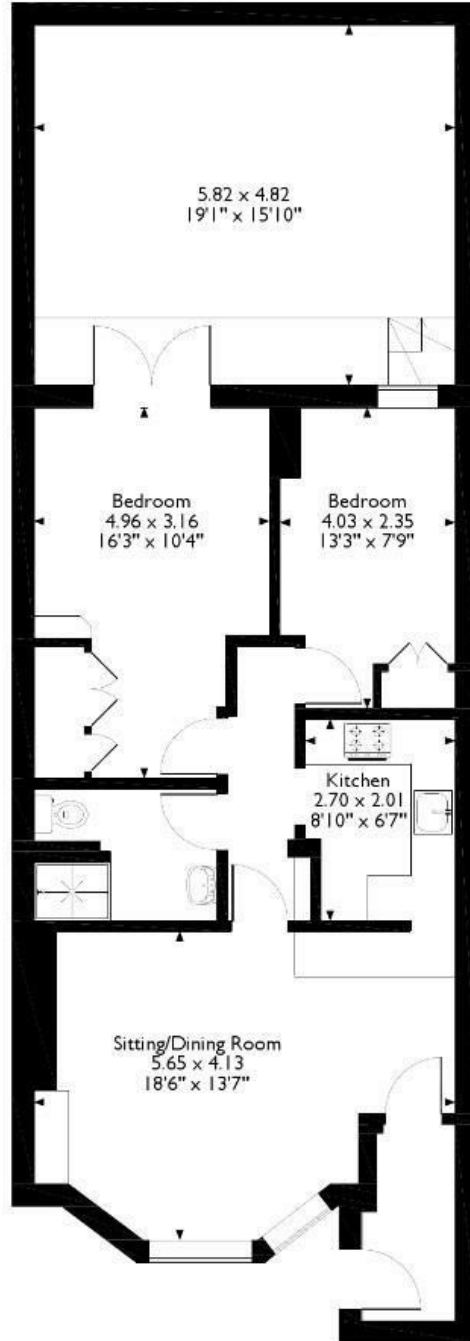


[Directions](#)



Floor Plan

Barton Road, London
 Approximate Gross Internal Area
 677 sqft/63 sqm



Please note that the location of doors, windows and other details are approximate and this floor plan is to be used for illustrative purposes only. Unauthorised reproduction prohibited.

These particulars, whilst believed to be accurate are set out as a general outline only for guidance and do not constitute any part of an offer or contract. Intending purchasers should not rely on them as statements of representation of fact, but must satisfy themselves by inspection or otherwise as to their accuracy. No person in this firm's employment has the authority to make or give any representation or warranty in respect of the property.

Energy Efficiency Rating		Environmental Impact (CO ₂) Rating	
	Current	Potential	
<p>Very energy efficient - lower running costs</p> <p>(92 plus) A</p> <p>(81-91) B</p> <p>(69-80) C</p> <p>(55-68) D</p> <p>(39-54) E</p> <p>(21-38) F</p> <p>(1-20) G</p> <p>Not energy efficient - higher running costs</p>		72	74
<p>Very environmentally friendly - lower CO₂ emissions</p> <p>(92 plus) A</p> <p>(81-91) B</p> <p>(69-80) C</p> <p>(55-68) D</p> <p>(39-54) E</p> <p>(21-38) F</p> <p>(1-20) G</p> <p>Not environmentally friendly - higher CO₂ emissions</p>			
England & Wales	EU Directive 2002/91/EC		EU Directive 2002/91/EC